

DW

Installation and operating instructions

GB D F I E P GR NL S FIN DK
PL RU H SI HR YU RO CZ SK



(GB) Declaration of Conformity

We **Grundfos** declare under our sole responsibility that the products **DW**, to which this declaration relates, are in conformity with the Council Directives on the approximation of the laws of the EC Member States relating to

- Machinery (98/37/EC).
Standard used: EN ISO 12100.
- Electromagnetic compatibility (89/336/EEC).
Standards used: EN 61000-6-2 and EN 61000-6-3.
- Electrical equipment designed for use within certain voltage limits (73/23/EEC) [95].
Standards used: EN 60335-1: 1994 and EN 60335-2-41: 1997.

(F) Déclaration de Conformité

Nous **Grundfos** déclarons sous notre seule responsabilité que les produits **DW** auxquels se réfère cette déclaration sont conformes aux Directives du Conseil concernant le rapprochement des législations des Etats membres CE relatives à

- Machines (98/37/CE).
Standard utilisé: EN ISO 12100.
- Compatibilité électromagnétique (89/336/CEE).
Standards utilisés: EN 61000-6-2 et EN 61000-6-3.
- Matériel électrique destiné à employer dans certaines limites de tension (73/23/CEE) [95].
Standards utilisés: EN 60335-1: 1994 et EN 60335-2-41: 1997.

(E) Declaración de Conformidad

Nosotros **Grundfos** declaramos bajo nuestra única responsabilidad que los productos **DW** a los cuales se refiere esta declaración son conformes con las Directivas del Consejo relativas a la aproximación de las legislaciones de los Estados Miembros de la CE sobre

- Máquinas (98/37/CE).
Norma aplicada: EN ISO 12100.
- Compatibilidad electromagnética (89/336/CEE).
Normas aplicadas: EN 61000-6-2 y EN 61000-6-3.
- Material eléctrico destinado a utilizarse con determinadas límites de tensión (73/23/CE) [95].
Normas aplicadas: EN 60335-1: 1994 y EN 60335-2-41: 1997.

(GR) Δήλωση Συμμόρφωσης

Εμείς η **Grundfos** δηλώνουμε με αποκλειστικά δική μας ευθύνη ότι τα προϊόντα **DW** συμμορφώνονται με την Οδηγία του Συμβουλίου επί της σύγκλισης των νόμων των Κρατών Μελών της Ευρωπαϊκής Ένωσης σε σχέση με τα

- Μηχανήματα (98/37/ΕC).
Πρότυπο που χρησιμοποιήθηκε: EN ISO 12100.
- Ηλεκτρομαγνητική συμβατότητα (89/336/ΕΕC).
Πρότυπα που χρησιμοποιήθηκαν: EN 61000-6-2 και EN 61000-6-3.
- Ηλεκτρικές συσκευές σχεδιασμένες για χρήση εντός ορισμένων ορίων ηλεκτρικής τάσης (73/23/ΕΕC) [95].
Πρότυπα που χρησιμοποιήθηκαν: EN 60335-1: 1994 και EN 60335-2-41: 1997.

(S) Försäkran om överensstämmelse

Vi **Grundfos** försäkrar under ansvar, att produkterna **DW**, som omfattas av denna försäkran, är i överensstämmelse med Rådets Direktiv om inbördes tillägnande till EU-medlemsstaternas lagstiftning, avseende

- Maskinell utrustning (98/37/EC).
Använd standard: EN ISO 12100.
- Elektromagnetisk kompatibilitet (89/336/EEC).
Använda standarder: EN 61000-6-2 och EN 61000-6-3.
- Elektrisk material avsedd för användning inom vissa spänningsgränser (73/23/EEC) [95].
Använda standarder: EN 60335-1: 1994 och EN 60335-2-41: 1997.

(DK) Overensstemmelseserklæring

Vi **Grundfos** erklærer under ansvar, at produkterne **DW**, som denne erklæring omhandler, er i overensstemmelse med Rådets direktiver om indbyrdes tilnærmelse til EF medlemsstaternes lovgivning om

- Maskiner (98/37/EF).
Anvendt standard: EN ISO 12100.
- Elektromagnetisk kompatibilitet (89/336/EFØF).
Anvendte standarder: EN 61000-6-2 og EN 61000-6-3.
- Elektrisk materiel bestemt til anvendelse inden for visse spændingsgrænser (73/23/EFØF) [95].
Anvendte standarder: EN 60335-1: 1994 og EN 60335-2-41: 1997.

(D) Konformitätserklärung

Wir **Grundfos** erklären in alleiniger Verantwortung, dass die Produkte **DW**, auf die sich diese Erklärung bezieht, mit den folgenden Richtlinien des Rates zur Angleichung der Rechtsvorschriften der EG-Mitgliedstaaten übereinstimmen

- Maschinen (98/37/EG).
Norm, die verwendet wurde: EN ISO 12100.
- Elektromagnetische Verträglichkeit (89/336/EWG).
Normen, die verwendet wurden: EN 61000-6-2 und EN 61000-6-3.
- Elektrische Betriebsmittel zur Verwendung innerhalb bestimmter Spannungsgrenzen (73/23/EWG) [95].
Normen, die verwendet wurden: EN 60335-1: 1994 und EN 60335-2-41: 1997.

(I) Dichiarazione di Conformità

Noi **Grundfos** dichiariamo sotto la nostra esclusiva responsabilità che i prodotti **DW** ai quali questa dichiarazione se riferisce sono conformi alle Direttive del Consiglio concernente il ravvicinamento delle legislazioni degli Stati membri CE relative a

- Macchine (98/37/CE).
Standard usato: EN ISO 12100.
- Compatibilità elettromagnetica (89/336/CEE).
Standard usati: EN 61000-6-2 e EN 61000-6-3.
- Materiale elettrico destinato ad essere utilizzato entro certi limiti di tensione (73/23/CE) [95].
Standard usati: EN 60335-1: 1994 e EN 60335-2-41: 1997.

(P) Declaração de Conformidade

Nós **Grundfos** declaramos sob nossa única responsabilidade que os produtos **DW** aos quais se refere esta declaração estão em conformidade com as Directivas do Conselho das Comunidades Europeias relativas à aproximação das legislações dos Estados Membros respeitantes à

- Máquinas (98/37/CE).
Norma utilizada: EN ISO 12100.
- Compatibilidade electromagnética (89/336/CEE).
Normas utilizadas: EN 61000-6-2 e EN 61000-6-3.
- Material eléctrico destinado a ser utilizado dentro de certos limites de tensão (73/23/CEE) [95].
Normas utilizadas: EN 60335-1: 1994 e EN 60335-2-41: 1997.

(NL) Overeenkomstigheidsverklaring

Wij **Grundfos** verklaren geheel onder eigen verantwoordelijkheid dat de producten **DW** waarop deze verklaring betrekking heeft in overeenstemming zijn met de Richtlijnen van de Raad inzake de onderlinge aanpassing van de wetgevingen van de Lid-Staten betreffende

- Machines (98/37/EG).
Norm: EN ISO 12100.
- Elektromagnetische compatibiliteit (89/336/EEG).
Normen: EN 61000-6-2 en EN 61000-6-3.
- Elektrisch materiaal bestemd voor gebruik binnen bepaalde spanningsgrenzen (73/23/EEG) [95].
Normen: EN 60335-1: 1994 en EN 60335-2-41: 1997.

(FIN) Vastaavuusvakuutus

Me **Grundfos** vakuutamme yksin vastuullisesti, että tuotteet **DW**, jota tämä vakuutus koskee, noudattavat direktiivejä jotka käsittelevät EY:n jäsenvaltioiden koneellisia laitteita koskevien lakien yhdenmukaisuutta seur:

- Koneet (98/37/EY).
Käytetty standardi: EN ISO 12100.
- Elektromagneettinen vastaavuus (89/336/EY).
Käytetyt standardit: EN 61000-6-2 ja EN 61000-6-3.
- Määrättyjen jännitearajojen puitteissa käytettävät sähköiset laitteet (73/23/EY) [95].
Käytetyt standardit: EN 60335-1: 1994 ja EN 60335-2-41: 1997.

(PL) Deklaracja zgodności

My, **Grundfos**, oświadczamy z pełną odpowiedzialnością, że nasze wyroby **DW** których deklaracja niniejsza dotyczy, są zgodne z następującymi wytycznymi Rady d/s ujednolicenia przepisów prawnych krajów członkowskich EG:

- maszyny (98/37/EG),
zastosowana norma: EN ISO 12100,
- zgodność elektromagnetyczna (89/336/EWG),
zastosowane normy: EN 61000-6-2 i EN 61000-6-3.
- wyposażenie elektryczne do stosowania w określonym zakresie napięć (73/23/EWG) [95],
zastosowane normy: EN 60335-1: 1994 i EN 60335-2-41: 1997.

(RU) Свидетельство о соответствии требованиям

Мы, фирма **Grundfos**, со всей ответственностью заявляем, что изделия **DW** к которым и относится данное свидетельство, отвечают требованиям следующих указаний Совета ЕС об унификации законодательных предписаний стран-членов ЕС:

- Машиностроение (98/37/EC).
- Применявшиеся стандарты: Евростандарт EN ISO 12100.
- Электромагнитная совместимость (89/336/ЕЭС).
- Применявшиеся стандарты: Евростандарт EN 61000-6-2 и EN 61000-6-3.
- Электрические машины для эксплуатации в пределах определенного диапазона значений напряжения (73/23/ЕЭС) [95].
- Применявшиеся стандарты: Евростандарт EN 60335-1: 1994 и EN 60335-2-41: 1997.

(SI) Izjava o ustreznosti

Ми, **Grundfos**, pod polno odgovornostjo izjavljamo, da so izdelki **DW**, na katere se ta izjava nanaša, v skladu z naslednjimi smernicami Sveta za uskladitev pravnih predpisov držav članic Evropske skupnosti:

- Stroji (98/37/EG).
- Uporabljena norma: EN ISO 12100.
- Elektromagnetna kompatibilnost (89/336/EWG).
- Uporabljeni normi: EN 61000-6-2 in EN 61000-6-3.
- Električna pogonska sredstva za uporabo v določenih napetostnih mejah (73/23/EWG) [95].
- Uporabljeni normi: EN 60335-1: 1994 in EN 60335-2-41: 1997.

(YU) Izjava o konformitetu

Ми, **Grundfos**, izjavljujemo pod potpunom odgovornošću da su proizvodi **DW** na koje se odnosi ova izjava u saglasnosti sa smernicama i uputstvima Saveta za usaglašavanje pravnih propisa članica Evropske unije:

- mašine (98/37/EG),
korišćen standard: EN ISO 12100.
- elektromagnetna usaglašenost (89/336/EWG),
korišćeni standardi: EN 61000-6-2 i EN 61000-6-3.
- električna oprema razvijena za korišćenje unutar određenih naponskih granica: (73/23/EWG) [95].
korišćeni standardi: EN 60335-1: 1994 i EN 60335-2-41: 1997.

(CZ) Prohlášení o konformitě

My firma **Grundfos** prohlašujeme na svou plnou odpovědnost, že výrobky **DW** na něž se toto prohlášení vztahuje, jsou v souladu s ustanoveními směrnice Rady pro sblížení právních předpisů členských států Evropského společenství v oblastech:

- strojírenství (98/37/EG),
použitá norma: EN ISO 12100.
- elektromagnetická kompatibilita (89/336/EWG),
použitá norma: EN 61000-6-2 a EN 61000-6-3.
- provozování spotřebičů v toleranci napětí (73/23/EWG) [95],
použitá norma: EN 60335-1: 1994 a EN 60335-2-41: 1997.

(H) Konformitási nyilatkozat

Mi, a **Grundfos**, egyedüli felelősséggel kijelentjük, hogy az **DW** termékek, amelyekre jelen nyilatkozat vonatkozik, megfelelnek az Európai Unió tagállamainak jogi irányelveit összehangoló tanács alábbi irányelveinek:

- Gépek (98/37/EK).
- Alkalmazott szabvány: EN ISO 12100.
- Elektromágneses összeférhetőség (89/336/EGK).
- Alkalmazott szabványok: EN 61000-6-2 és EN 61000-6-3.
- Meghatározott feszültség határokon belül használt elektronikus eszközök (73/23/EGK) [95].
- Alkalmazott szabványok: EN 60335-1: 1994 és EN 60335-2-41: 1997.

(HR) Izjava o usklađenosti

Ми, **Grundfos**, izjavljujemo uz punu odgovornost, da su proizvodi **DW** na koje se ova izjava odnosi, sukladni smjernicama Savjeta za prilagodbu propisa država-članica EZ:

- Strojevi (98/37/EZ).
- Korištena norma: EN ISO 12100.
- Elektromagnetska kompatibilnost (89/336/EEZ).
- Korištene norme: EN 61000-6-2 i EN 61000-6-3.
- Električni pogonski uređaji za korištenje unutar određenih granica napona (73/23/EEZ) [95].
- Korištene norme: EN 60335-1: 1994 i EN 60335-2-41: 1997.

(RO) Declarație de conformitate

Noi, **Grundfos**, declarăm asumându-ne întreaga responsabilitate că produsele **DW** la care se referă această declarație sunt în conformitate cu Directivele Consiliului în ceea ce privește alinierea legislațiilor Statelor Membre ale CE, referitoare la:

- Utilaje (98/37/CE).
- Standard aplicat: EN ISO 12100.
- Compatibilitate electromagnetă (89/336/CEE).
- Standarde aplicate: EN 61000-6-2 și EN 61000-6-3.
- Echipamente electrice destinate utilizării între limite exacte de tensiune (73/23/CEE) [95].
- Standarde aplicate: EN 60335-1: 1994 și EN 60335-2-41: 1997.

(SK) Prehlásenie o konformite

My firma **Grundfos**, na svoju plnú zodpovednosť prehlasujeme, že výrobky **DW**, na ktoré sa toto prehlásenie vztahuje, sú v súlade s nasledovnými smernicami Rady pro zblíženie právnych predpisov členských zemí Európskej únie:

- Stroje (98/37/EG).
- Použitá norma: EN ISO 12100.
- Elektromagnetická kompatibilita (89/336/EWG).
- Použitá norma: EN 61000-6-2 a EN 61000-6-3.
- Elektrické prevádzkové prostriedky, použité v určitom napätovom rozsahu (73/23/EWG) [95].
- Použitá norma: EN 60335-1: 1994 a EN 60335-2-41: 1997.

Bjerringbro, 15th August 2005



Jan Strandgaard
Technical Director

DW

Installation and operating instructions	6	GB
Montage- und Betriebsanleitung	12	D
Notice d'installation et d'entretien	21	F
Istruzioni di installazione e funzionamento	28	I
Instrucciones de instalación y funcionamiento	35	E
Instruções de instalação e funcionamento	42	P
Οδηγίες εγκατάστασης και λειτουργίας	50	GR
Installatie- en bedieningsinstructies	58	NL
Monterings- och driftsinstruktion	64	S
Asennus- ja käyttöohjeet	71	FIN
Monterings- og driftsinstruktion	78	DK
Instrukcja montażu i eksploatacji	85	PL
Руководство по монтажу и эксплуатации	94	RU
Szerelési és üzemeltetési utasítás	105	H
Navodilo za montažo in obratovanje	113	SI
Montažne i pogonske upute	122	HR
Uputstvo za montažu i upotrebu	131	YU
Instrucțiuni de instalare și utilizare	139	RO
Montážní a provozní návod	146	CZ
Návod na montáž a prevádzku	155	SK

CONTENTS

GB

	Page
1. General description	6
1.1 Applications	6
1.2 Operating conditions	6
1.3 Sound pressure level	6
2. Safety	7
3. Transportation and storage	7
4. Installation	7
5. Electrical connection	7
5.1 Motor protection	7
6. Start-up	8
6.1 Direction of rotation	8
7. Maintenance and service	8
7.1 Contaminated pumps	9
8. Fault finding chart	9
9. Service kits	10
9.1 Shaft seal with O-rings	10
9.2 Cable with cable entry	10
9.3 Impeller kit	11
9.4 Valve kit	11
9.5 Electrode kit	11
10. Disposal	11



Before beginning installation procedures, these installation and operating instructions should be studied carefully. The installation and operation should also be in accordance with local regulations and accepted codes of good practice.

1. General description

1.1 Applications

Grundfos DW pumps are designed for pumping:

- water from construction sites,
- water in mining industry,
- groundwater,
- surface water.

The DW pumps can handle all solids that can pass through the suction strainer.

The compact design makes the pumps suitable for both temporary and permanent installation. As the pumps are made of light materials such as composite and aluminium, they are easy to move from one place to another.

1.2 Operating conditions

1.2.1 pH-value

The DW pumps can cope with pH-values ranging from 5 to 8.

1.2.2 Liquid temperature

Liquid temperature: 0°C to +40°C.

1.2.3 Density of pumped liquid

Maximum density of pumped liquid: 1100 kg/m³.

1.2.4 Installation depths

Pump type	Maximum depth
DW.50.08.(A)1/3	5 metres
DW.50.07.(A)1 DW.50.09.(A)3 DW.65.27.(A)	25 metres
DW.65.39.(A)H	
DW.100.66.(A)H	
DW.100.39.(A) DW.100.66.(A)	
DW.100.110.(A)H DW.100.200.(A)H	20 metres
DW.150.110.(A)	
DW.150.200.(A)	

1.2.5 Level of pumped liquid

The lowest stop level is the level where the pump starts to suck air.

The A models have an integrated level control system. A stands for "Automatic". This system will stop the pump when the stop level is reached.

Model DW.50.08.A has an external float switch.

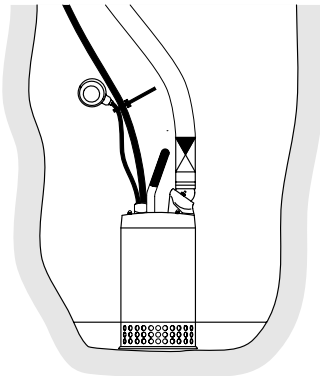
1.2.6 Operation

The pumps are designed for continuous operation.

The A models have to be switched over to "C" for continuous operation.

For model DW.50.08.A, the float switch must be tied up, see fig. 1.

Fig. 1



TM01 4948 1199

1.3 Sound pressure level

The sound pressure level of the pump is lower than the limiting values stated in the EC Council Directive 98/37/EEC relating to machinery.

2. Safety



Pump installation in wells must be carried out by specially trained persons.

3. Transportation and storage

The pump may be transported and stored in a vertical or horizontal position. Make sure that it cannot roll or fall over.

Always lift the pump by its carrying handle, **never** by the motor cable or the hose/pipe.

For long periods of storage, the pump must be protected against moisture and heat.

After a long period of storage, the pump should be inspected before it is put into operation. Make sure that the impeller can rotate freely. Pay special attention to the shaft seals and the cable entry.

4. Installation

Installation dimensions, see page 164.

Prior to installation, check the oil level in the oil chamber, see section 7. *Maintenance and service*.

The DW pumps have pump housing for free-standing installation.

The pump can be installed with a hose/pipe.

In order to facilitate service of the pump, fit a flexible union or coupling to the discharge line for easy separation.

If a hose is used, make sure that the hose does not buckle and that the inside diameter of the hose matches that of the discharge port.

If the pump is installed in muddy conditions or on uneven ground, it is recommended to support the pump on bricks.

Lower the pump into the liquid.

Model A:

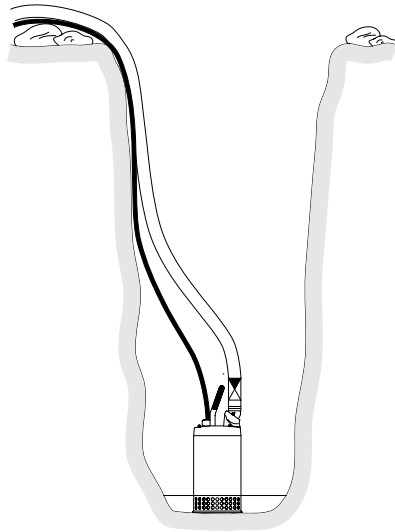
The A models have an integrated level control system.

By means of two electrodes, the level control system measures the water level in the water level compartment. The short electrode starts the pump and the long one stops the pump.

When the pump has drained the pit/sump, the rubber valve, situated next to the electrodes on top of the motor housing, will draw in air to drain the pump.

When the A models are used for automatic operation in deep pits/sumps, a non-return valve must be mounted immediately after the discharge port to prevent backflow and thus intermittent operation when the pit/sump has been drained. See fig. 2.

Fig. 2



TM01 3433 3998

GB

5. Electrical connection

The electrical connection of the pump should be carried out in accordance with local regulations.

The operating voltage and frequency are marked on the nameplate. Voltage tolerance: $\pm 10\%$ of the voltage stated on the nameplate. Make sure that the motor is suitable for the electricity supply available at the installation site.

5.1 Motor protection

All Grundfos DW pumps have a thermal switch built into the stator windings.

All **single-phase** Grundfos DW pumps are supplied with an operating capacitor.

For capacitor sizes, see the table below:

Pump type	Operating capacitor
	[μF]
DW.50.07.1	16
DW.50.08.1	16

6. Start-up

When the electrical connection has been carried out, the pump is ready for operation.

Submerge the pump into the liquid to be pumped and start it.

The valve for the level control system will automatically vent the pump. Therefore, there will be no problems with air in the pump.

6.1 Direction of rotation

All **single-phase** pumps are factory-set to the correct direction of rotation.

Before starting up **three-phase** pumps, check the direction of rotation. The direction of rotation should be clockwise.

When starting up, the pump will jerk in the opposite direction to the direction of rotation (the arrow on the top cover indicates the direction of the jerk). If the direction of rotation is wrong, interchange two of the three phases of the electricity supply.

7. Maintenance and service



Before starting work on the pump, make sure that the electricity supply has been switched off and that it cannot be accidentally switched on. Furthermore, all rotating parts must have stopped moving.

Before carrying out maintenance and service, make sure that the pump has been thoroughly flushed with clean water. Rinse the pump parts in water after dismantling.



When unscrewing the inspection screw of the oil chamber, please note that pressure may have built up in the chamber. Do not remove the screw until the pressure has been fully relieved.

Pumps running normal operation should be inspected at least once a year. If the pumped liquid is very muddy or sandy, inspect the pump at shorter intervals.

When the pump is new or after replacement of the shaft seals, check the oil level after one week of operation.

For long and trouble-free operation of the pump the following points should be checked regularly:

- **Power consumption**
- **Oil level and oil condition**

The oil becomes greyish white like milk if it contains water. This may be the result of a defective shaft seal. The oil should be replaced after 3000 hours of operation (DW.50.08, 1000 hours). Use Shell Ondina 934.

Note: Used oil must be disposed of in accordance with local regulations.

The following table states how much oil the DW pumps must have in the oil chamber:

Pump type	Voltage	Quantity of oil [l]
Single-phase		
DW.50.07.1	1 x 230 V	0.25
DW.50.07.A1	1 x 230 V	0.25
DW.50.08.1	1 x 230 V	*
DW.50.08.A1	1 x 230 V	*
Three-phase		
DW.50.08.3	3 x 400 V	*
DW.50.08.A3	3 x 400 V	*
DW.50.09.3	3 x 400 V	0.25
DW.50.09.A3	3 x 400 V	0.25
DW.65.27	3 x 400 V	0.3
DW.65.27.A	3 x 400 V	0.3
DW.65.39	3 x 400 V	0.3
DW.65.39.A	3 x 400 V	0.3
DW.100.66.H	3 x 400 V	0.3
DW.100.66.AH	3 x 400 V	0.3
DW.100.39	3 x 400 V	0.3
DW.100.39.A	3 x 400 V	0.3
DW.100.66	3 x 400 V	0.3
DW.100.66.A	3 x 400 V	0.3
DW.100.110.H	3 x 400 V	2.3
DW.100.110.AH	3 x 400 V	2.3
DW.150.110	3 x 400 V	2.3
DW.150.110.A	3 x 400 V	2.3
DW.100.200.H	3 x 400 V	2.3
DW.100.200.AH	3 x 400 V	2.3
DW.150.200	3 x 400 V	2.3
DW.150.200.A	3 x 400 V	2.3

* Filled with grease (Klüber Synteso Proba 330).

• **Cable entry**

Make sure that the cable entry is watertight and that the cables are not bent sharply and/or pinched.

• **Pump parts**

Check the impeller, pump housing, diffuser, impeller disc etc. for possible wear. Replace defective parts.

• **Ball bearings**

Check the shaft for noisy or heavy operation (turn the shaft by hand). Replace defective ball bearings.

A general overhaul of the pump is usually required in case of defective ball bearings or poor motor function. This work must be carried out by the manufacturer or a competent workshop.

7.1 Contaminated pumps

Note: If a pump has been used for a liquid which is injurious to health or toxic, the pump will be classified as contaminated.

If Grundfos is requested to service the pump, Grundfos must be contacted with details about the pumped liquid, etc. *before* the pump is returned for service. Otherwise Grundfos can refuse to accept the pump for service.

Possible costs of returning the pump are paid by the customer.

However, any application for service (no matter to whom it may be made) must include details about the pumped liquid if the pump has been used for liquids which are injurious to health or toxic.

8. Fault finding chart



Make sure that all power supplies have been switched off and that all rotating parts have stopped moving before attempting to diagnose any fault.

Fault	Cause	Remedy
1. Motor does not start. Fuses blow or motor starter trips out immediately. Caution: Do not start again!	a) Supply failure; short-circuit; earth-leakage fault in cable or motor winding.	Have the cable and motor checked and repaired by a qualified electrician.
	b) Fuses blow due to use of wrong type of fuse.	Install fuses of the correct type.
	c) Impeller blocked by impurities.	Clean the impeller.
	d) The electrodes are dirty or defective.	Clean or replace the electrodes.
2. Pump operates, but motor starter trips out after a short while.	a) Low setting of thermal relay in motor starter.	Set the relay in accordance with the specifications on the nameplate.
	b) Increased current consumption due to large voltage drop.	Measure the voltage between motor phases. Tolerance: $\pm 10\%$.
	c) Impeller blocked by impurities. Increased current consumption in all three phases.	Clean the impeller.
	d) For pumps running automatic operation, the non-return valve may be defective.	Replace the non-return valve
3. Pump operates at below-standard performance and power consumption.	a) Impeller blocked by impurities.	Clean the impeller.
	b) Wrong direction of rotation.	Check the direction of rotation and possibly interchange two phases, see section 6.1 <i>Direction of rotation</i> .
	c) The electrodes are dirty or defective.	Clean or replace the electrodes.
4. Pump operates, but gives no liquid.	a) The electrodes are dirty or defective.	Clean or replace the electrodes.

9. Service kits

9.1 Shaft seal with O-rings

Pos.	Description	Pump type					
		DW.50.09		DW.65.39H		DW.100.200H	
		DW.50.07	DW. 50.08	DW.65.27	DW.100.39	DW.100.66H	DW.100.110H
Kit no.	96005279	96005278	96005280	96005281	96005276	96005277	
16	O-ring	1		1	1		
31	Fibre ring	3		3	3	3	3
32	O-ring	1		1	1	1	1
34	O-ring	3		5	5	4	4
35	O-ring	1		1	1	1	1
37	Shaft seal	1	1	1	1	1	1
39	O-ring			1	1	1	1
40	Seal ring					1	1
45	Fibre ring	3		3	3	5	5
49	O-ring	2	1	1	2	1	2
50	O-ring						1
51	O-ring		2			1	2
55	O-ring	1	1	1	1	1	1
57	O-ring		1				
61	O-ring					1	1
66	O-ring	1		1	1	1	1
76	Rubber bush			1	1	2	2
78	O-ring	2		2	2	2	2
83	O-ring	2		2	2	2	2
103	Shaft seal					1	1
108	Rubber bush	1	1			1	1
114	Fibre ring	1		1	1		
146	Rubber bush		1				
150	V-ring		1				
152	O-ring		1				
167	O-ring					2	2

9.2 Cable with cable entry

Pos.	Description	Pump type								
		Three-phase	Single-phase	3 x 400 V						
		DW.50.08	DW.50.07	DW.65.27	DW.65.39H	DW.100.39	DW.100.66H	DW.100.110H	DW.150.110	DW.100.200H
Kit no.	96459668	96005269	96005270	96005271	96005272	96005273				
75	Washer			2	1	1	1			
76	Rubber bush			1	1	1	1			
77	Washer				1	1	1			
80	Cable entry			1	1	1	1			
81	Screw			2	2	2	1			
82	Clamp			1	1	1	1			
85	Motor cable	1	1	1	1	1	1			
107	Washer	1	1							
108	Rubber bush	1	1							
109	Cable entry unit	1	1							
110	Cable sleeve	1	1							

9.3 Impeller kit

Pos.	Description	Pump type					
		DW.50.07	DW.50.08	DW.50.09	DW.65.27	DW.65.39	DW.100.39
Kit no.		96006808	96006817	96006809	96006810	96006811	96006812
18	Impeller	1	1	1	1	1	1
19	Diffuser	1	1	1	1	1	1
21	Split cone	1		1	1	1	1
28	Impeller disc	1	1	1	1	1	1

Pos.	Description	Pump type					
		DW.100.66	DW.100.66.H	DW.100.110H	DW.100.200.H	DW.150.110	DW.150.200
		DW.100.66.A	DW.100.66.AH	DW.100.110.AH	DW.100.200.AH	DW.150.110A	DW.150.200A
Kit no.		96006813	96006814	96005274	96005275	96006815	96006816
8	Inlet part						1
13	Diffuser		1	1	1		
17	Split cone			1	1		
18	Impeller	1	2	2	2	1	1
19	Diffuser	1	1	1	1	1	1
21	Split cone			1	1	1	1
22	Impeller disc			1	1		
25	Seal ring				1		
28	Impeller disc	1	1	1	1	1	1

9.4 Valve kit

Pos.	Description	Pump type		
		DW.65.27	DW.65.39	DW.100.110
		DW.50.07	DW.100.39	DW.150.110
		DW.50.09	DW.100.66	DW.150.200
Kit no.		96006810	96006811	96006812
71	Valve guide			1
72	Valve rubber	1	1	1
78	O-ring	2	2	2
79	Valve body	1	1	1
86	Valve cap	1	1	1
87	Protective cap			1
88	Screw			1

9.5 Electrode kit

Pos.	Description	Pump type
		DW.50.07
		DW.50.09
		DW.65
		DW.100
		DW.150
Kit no.		96005243
35	O-ring	1
66	O-ring	1
67	Electrode unit	1
68	Rubber cap	1

10. Disposal

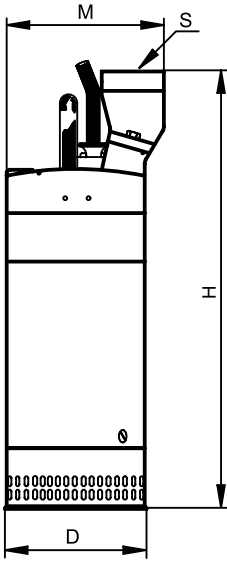
Disposal of this product or parts of it must be carried out according to the following guidelines:

1. Use the local public or private waste collection service.
2. In case such waste collection service does not exist or cannot handle the materials used in the product, please deliver the product or any hazardous materials from it to your nearest Grundfos company or service workshop.

Dimensions

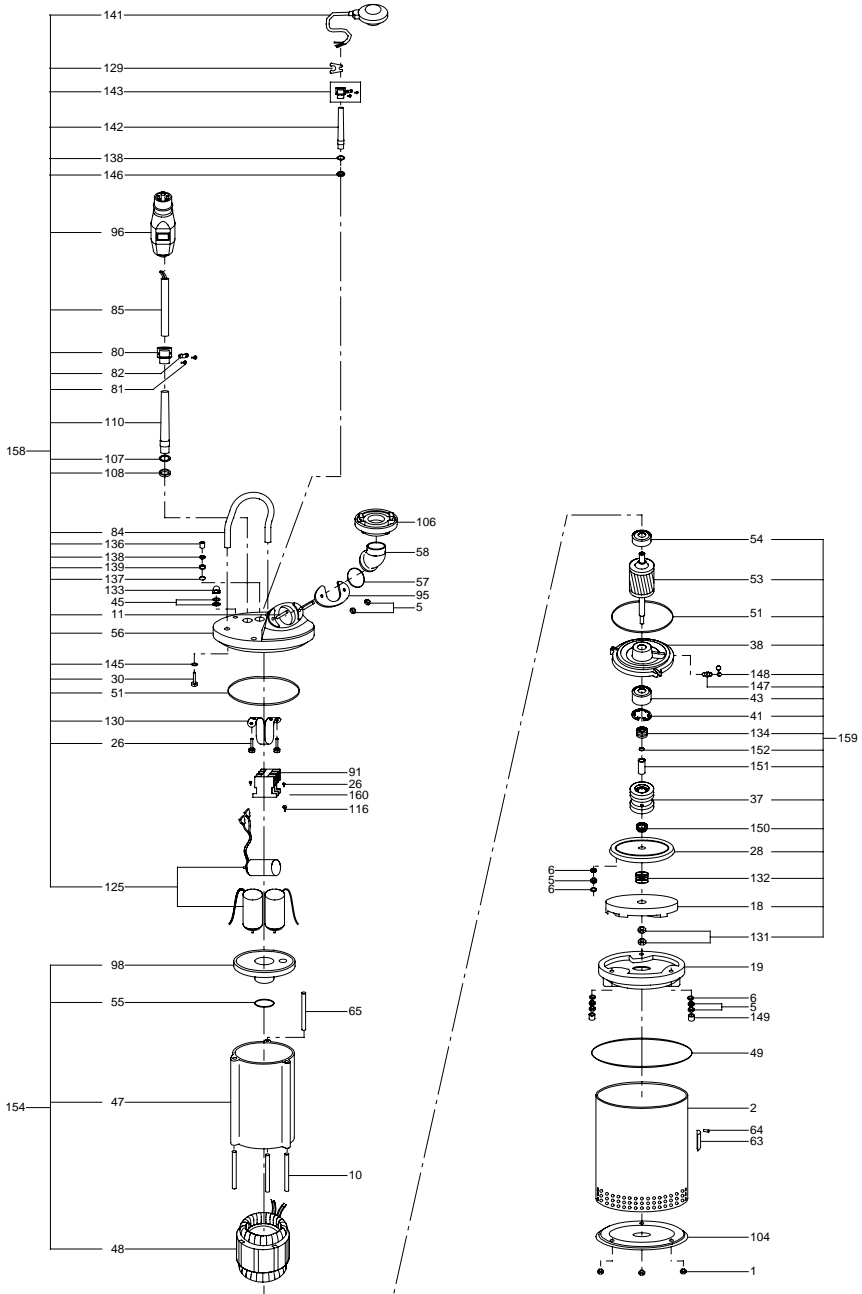
Pump type	H [mm]	D [mm]	M [mm]	S [mm] / [inch]
Single-phase				
DW.50.07.1	395	210	212	50 / R 2
DW.50.07.A1	395	210	212	50 / R 2
Three-phase				
DW.50.09.3	365	210	212	50 / R 2
DW.50.09.A3	365	210	212	50 / R 2
DW.65.27	525	246	250	65 / R 2½
DW.65.27.A	525	246	250	65 / R 2½
DW.65.39	590	246	275	65 / R 2½
DW.65.39.A	590	246	275	65 / R 2½
DW.100.66.H	710	246	275	100 / R 4
DW.100.66.AH	710	246	275	100 / R 4
DW.100.39	590	246	275	100 / R 4
DW.100.39.A	590	246	275	100 / R 4
DW.100.66	710	246	275	100 / R 4
DW.100.66.A	710	246	275	100 / R 4
DW.100.110.H	820	360	410	100 / R 4
DW.100.110.AH	820	360	410	100 / R 4
DW.150.110	820	360	410	150 / R 6
DW.150.110.A	820	360	410	150 / R 6
DW.100.200.H	1000	360	410	100 / R 4
DW.100.200.AH	1000	360	410	100 / R 4
DW.150.200	1000	360	410	150 / R 6
DW.150.200.A	1000	360	410	150 / R 6
Pump type	H [mm]	D [mm]	M [mm]	S [mm] / [inch]
DW.50.08.1	432	200	200	50 / R 2
DW.50.08.A1	432	200	200	50 / R 2
DW.50.08.3	432	200	200	50 / R 2
DW.50.08.A3	432	200	200	50 / R 2

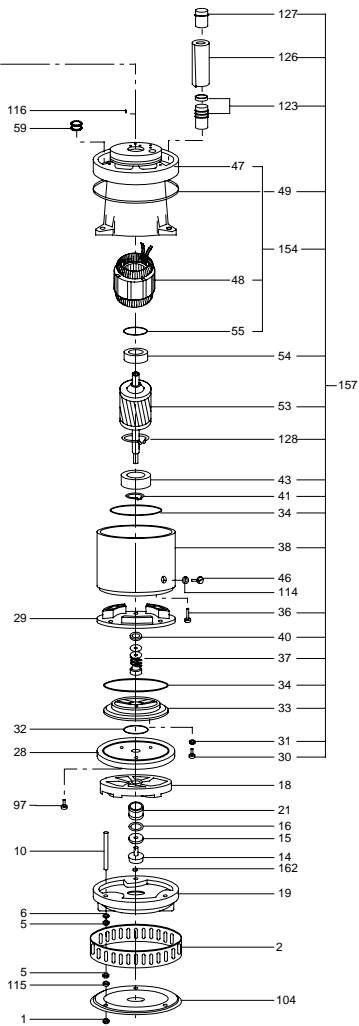
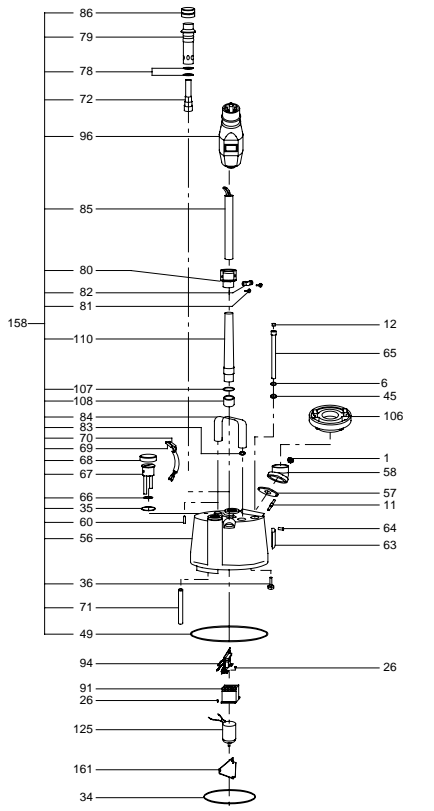
Dimensional sketch



TM01 3347 3998

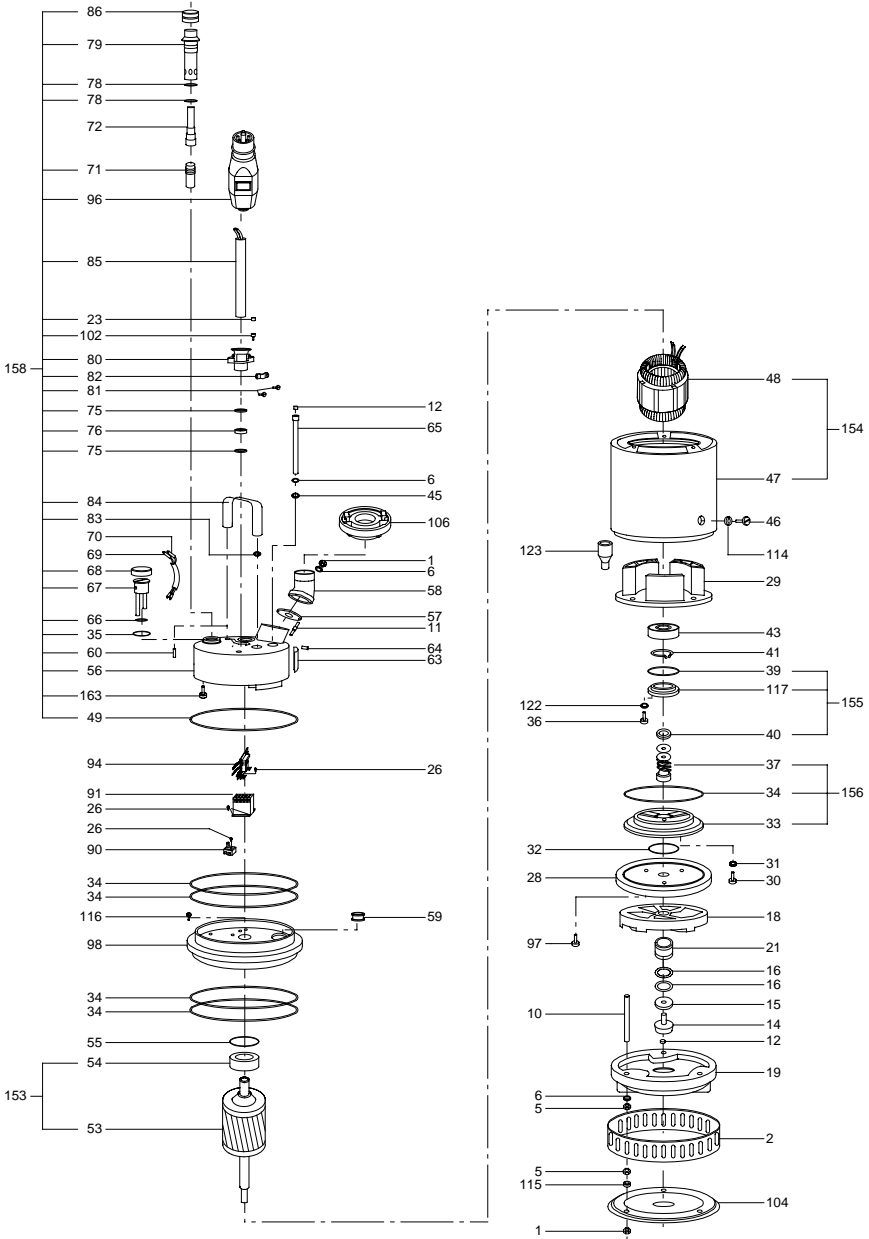
DW.50.08





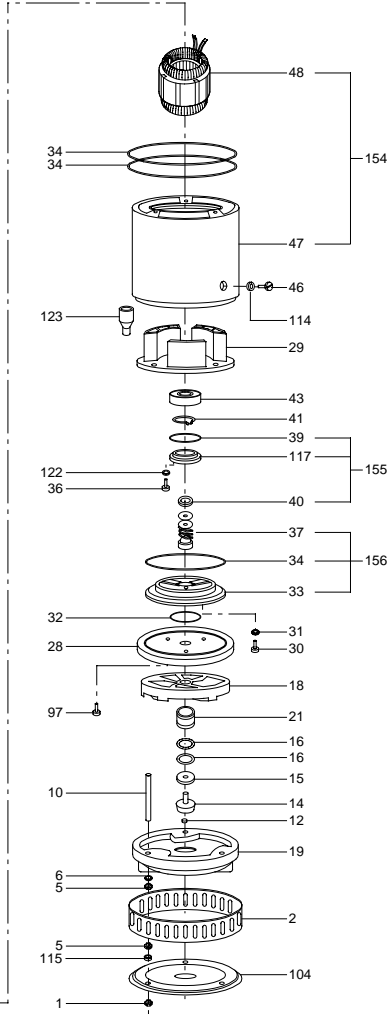
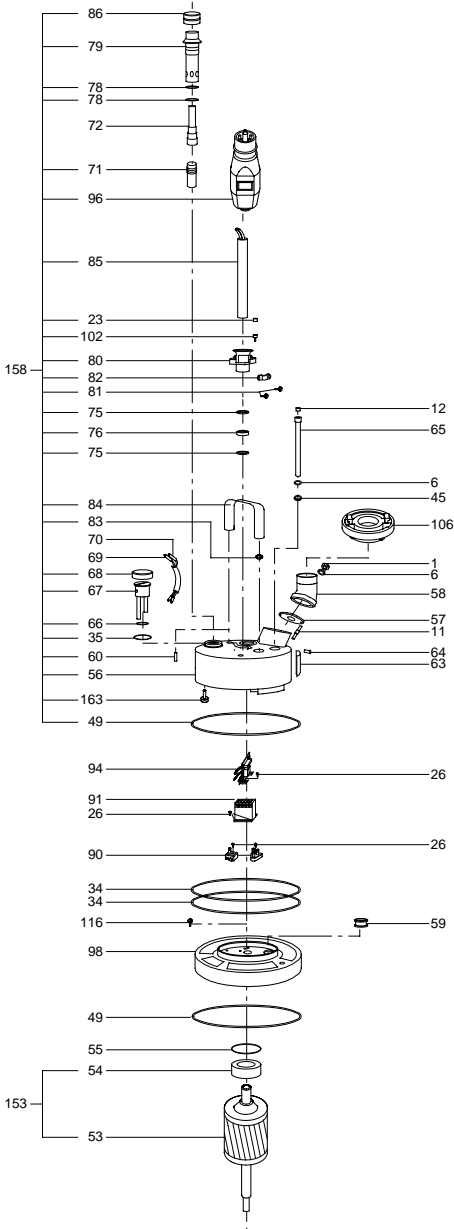
TM01 4535 2201

DW.65.27



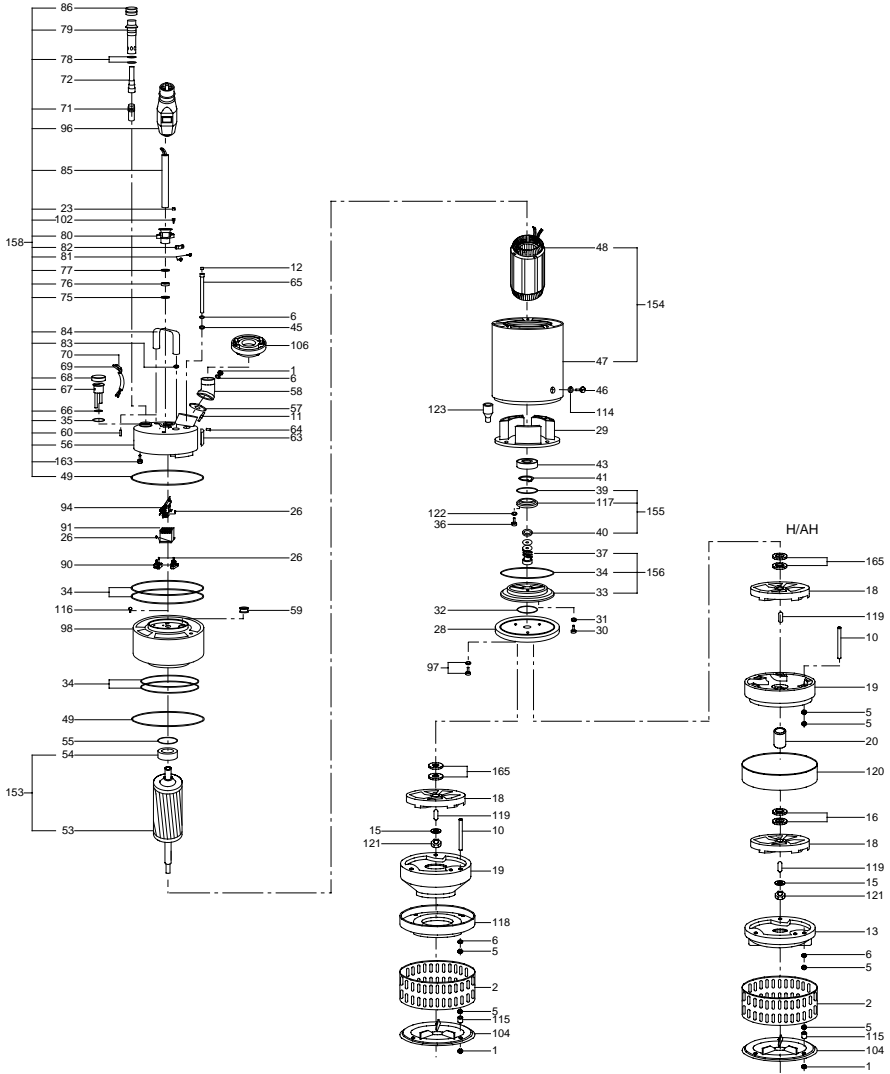
TIM01 4536 2201

DW.65.39H/100.39



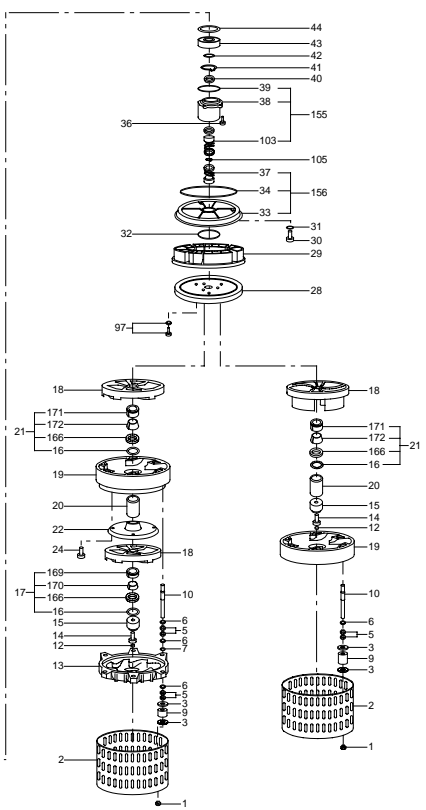
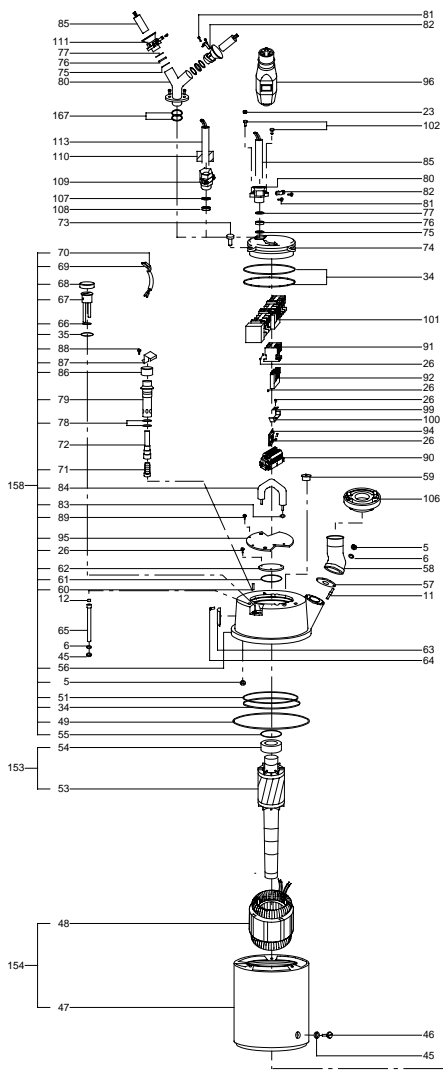
TM01 4540 2201

DW.100.66/100.66H



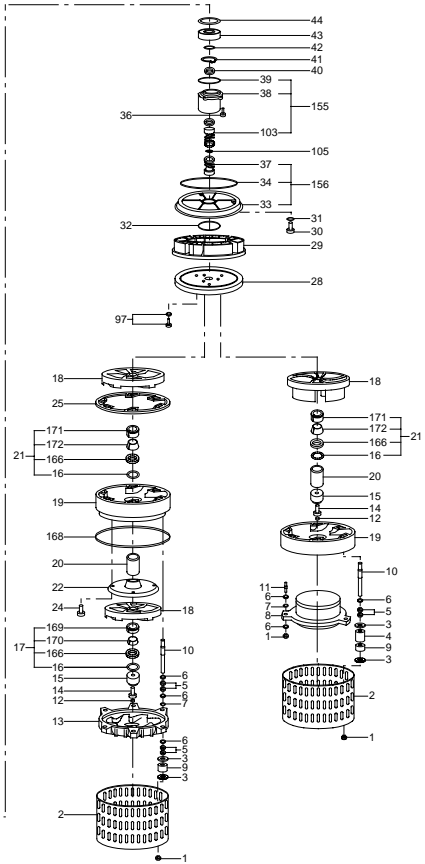
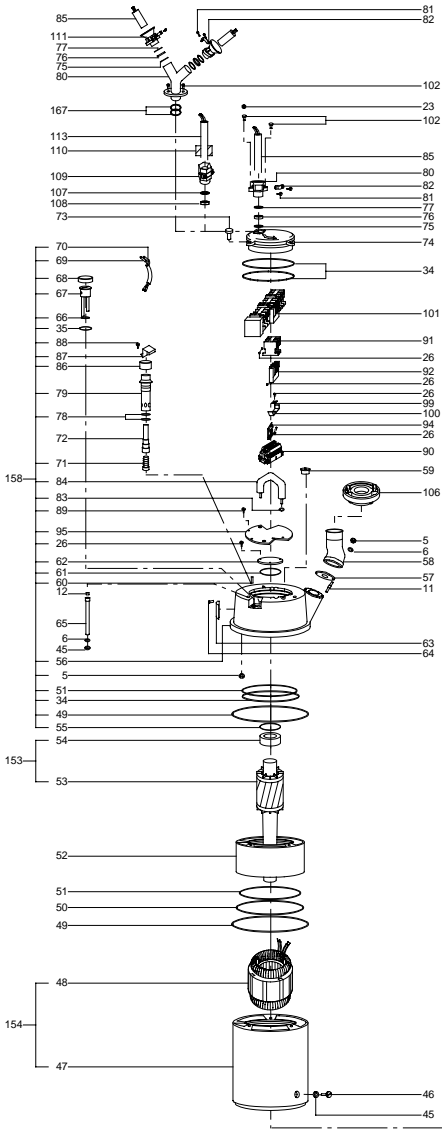
TM02 1862 2501

DW.100.110H/150.110



TM01 4538 2201

DW.100.200H/150.200



Denmark

GRUNDFOS DK A/S
Martin Bachs Vej 3
DK-8850 Bjerringbro
Tlf.: +45-87 50 50 50
Telefax: +45-87 50 51 51
E-mail: info_GDK@grundfos.com
www.grundfos.com/DK

Albania

COALB sh.p.k.
Rr.Dervish Hekali N.1
AL-Tirana
Phone: +355 42 22727
Telefax: +355 42 22727

Argentina

Bombas GRUNDFOS de Argentina S.A.
Ruta Panamericana km. 37.500 Lote 34A
1619 - Garin
Pcia. de Buenos Aires
Phone: +54-3327.414.444
Telefax: +54-3327.411.111

Australia

GRUNDFOS Pumps Pty. Ltd.
P.O. Box 2040
Regency Park
South Australia 5942
Phone: +61-8-8461-4611
Telefax: +61-8-8340 0155

Austria

GRUNDFOS Pumpen Vertrieb Ges.m.b.H.
Grundfosstraße 2
A-5082 Gröding/Salzburg
Tel.: +43-6246-883-0
Telefax: +43-6246-883-30

Belgium

N.V. GRUNDFOS Bellux S.A.
Boomssesteenweg 81-83
B-2630 Aartselaar
Tel.: +32-3-870 7300
Télécopie: +32-3-870 7301

Belorussia

Представительство ГРУНДФОС в
Минске
220000 Минск ул.Олешина 14
Телефон: (8632) 62-40-49
Факс: (8632) 62-40-49

Bosnia/Herzegovina

GRUNDFOS Sarajevo
Paromlinska br. 16,
BIH-71000 Sarajevo
Phone: +387 33 713290
Telefax: +387 33 231795

Brazil

GRUNDFOS do Brasil Ltda.
Rua Tomazina 104
CEP 83325 - 046
Pinhais - PR
Phone: +55-41 668 3555
Telefax: +55-41 668 3554

Bulgaria

GRUNDFOS Pumpen Vertrieb
Representative Office - Bulgaria
Bulgaria, 1421 Sofia
Lozometz District
105-107 Arsenatski blvd.
Phone: +359 2963 3820, 2963 5653
Telefax: +359 2963 1305

Canada

GRUNDFOS Canada Inc.
2941 Brighton Road
Oakville, Ontario
L6H 6C9
Phone: +1-905 829 9533
Telefax: +1-905 829 9512

China

GRUNDFOS Pumps (Shanghai) Co. Ltd.
22 Floor, Xin Hua Lian Building
755-775 Huai Hai Rd, (M)
Shanghai 200020
PRC
Phone: +86-512-67 61 11 80
Telefax: +86-512-67 61 81 67

Croatia

GRUNDFOS predstavništvo Zagreb
Radoslava Cimermana 64a
HR-10000 Zagreb
Phone: +385 1 6595 400
Telefax: +385 1 6595 499

Czech Republic

GRUNDFOS s.r.o.
Čajkovského 21
779 00 Olomouc
Phone: +420-585-716 111
Telefax: +420-585-438 906

Estonia

GRUNDFOS Pumps Eesti OÜ
Peturiburi tee 44
11415 Tallinn
Tel.: + 372 606 1690
Fax: + 372 606 1691

Finland

OY GRUNDFOS Pumput AB
Mestarintie 11
Piispankylä
FIN-01730 Vantaa (Helsinki)
Phone: +358-9 878 9150
Telefax: +358-9 878 9150

France

Pompes GRUNDFOS Distribution S.A.
Parc d'Activités de Chesnes
57, rue de Malacombes
F-38290 St. Quentin Fallavier (Lyon)
Tel.: +33-4-74 82 15 15
Télécopie: +33-4-74 94 10 51

Germany

GRUNDFOS GMBH
Schlüterstr. 33
40699 Erkrath
Tel.: +49-(0) 211 929 69-0
Telefax: +49-(0) 211 929 69-3799
e-mail: infoservice@grundfos.de
Service in Deutschland:
e-mail: kundendienst@grundfos.de

Greece

GRUNDFOS Hellas A.E.B.E.
20th km. Athinon-Markopoulou Av.
P.O. Box 71
GR-19002 Pessania
Phone: +0030-210-66 83 400
Telefax: +0030-210-66 46 273

Hong Kong

GRUNDFOS Pumps (Hong Kong) Ltd.
Unit 1, Ground floor
Siu Wai Industrial Centre
29-33 Wing Hong Street &
68 King Lam Street, Cheung Sha Wan
Kowloon
Phone: +852-27861706/27861741
Telefax: +852-27858664

Hungary

GRUNDFOS Hungaria Kft.
Park u. 8
H-2045 Torökbalint,
Phone: +36-23 511 110
Telefax: +36-23 511 111

India

GRUNDFOS Pumps India Private Limited
Flat A, Ground Floor
61/62 Chamiers Aptmt
Chamiers Road
Chennai 600 028
Phone: +91 44 432 3487
Telefax: +91 44 432 3489

Indonesia

PT GRUNDFOS Pompa
Jl. Rawas Timur III, Blok III / CC-1
Kawasan Industri, Pulogadung
Jakarta 13930
Phone: +62-21-460 6909
Telefax: +62-21-460 6910/460 6901

Ireland

GRUNDFOS (Ireland) Ltd.
Unit 34, Stillorgan Industrial Park
Blackrock
County Dublin
Phone: +353-1-2954926
Telefax: +353-1-2954739

Italy

GRUNDFOS Pompe Italia S.r.l.
Via Gran Sasso 4
I-20060 Trucuzzano (Milano)
Tel.: +39-02-95833112
Telefax: +39-02-95300290/95838461

Japan

GRUNDFOS Pumps K.K.
1-2-3, Shin Miyukoda
Hamamatsu City
Shizuoka pref. 431-21
Phone: +81-53-428 4760
Telefax: +81-53-484 1014

Korea

GRUNDFOS Pumps Korea Ltd.
6th Floor, Aju Building 679-5
Yeoksam-dong, Kangnam-ku, 135-916
Seoul, Korea
Phone: +82-2-5317 600
Telefax: +82-2-5633 725

Latvia

SIA GRUNDFOS Pumps Latvia
Deglava biznesa centrs
Augusta Deglava iela 60, LV-1035, Rīga,
Tālr.: + 371 714 9640, 7 149 641
Fakss: + 371 914 9646

Lithuania

GRUNDFOS Pumps UAB
Smolenko g. 6
LT-2600 Vilnius
Tel.: + 370 52 395 430
Fax: + 370 52 395 431

Macedonia

MAKOTERM
Dame Gruev Street 7
MK-91000 Skopje
Phone: +389 91 177733
Telefax: +389 91 220100

Malaysia

GRUNDFOS Pumps Sdn. Bhd.
7 Jalan Peguam U1/25
Glenmarie Industrial Park
40150 Shah Alam
Selangor
Phone: +60-3-5569 2922
Telefax: +60-3-5569 2866

Mexico

Bombas GRUNDFOS de Mexico S.A. de
C.V.
Boulevard TLC No. 15
Parque Industrial Stiva Aeroportuo
Apodaca, N.L. 66600
Mexico
Phone: +52-81-8144 4000
Telefax: +52-81-8144 4010

Netherlands

GRUNDFOS Nederland B.V.
Postbus 104
NL-1580 AC Weesp
Tel.: +31-294-492 211
Telefax: +31-294-492244/492299

New Zealand

GRUNDFOS Pumps NZ Ltd.
17 Beatrice Timley Crescent
North Harbour Industrial Estate
Albany, Auckland
Phone: +64-9-415 3240
Telefax: +64-9-415 3250

Norway

GRUNDFOS Pumper A/S
Strømsveien 34
Postboks 235, Leirdal
N-1011 Oslo
Tlf.: +47-22 90 47 00
Telefax: +47-22 32 21 50

Poland

GRUNDFOS Pompy Sp. z o.o.
ul. Klonowa 23
Baranowo k. Poznania
PL-62-081 Przeźmierow
Phone: (+48 61) 650 13 00
Telefax: (+48 61) 650 13 50

Portugal

Bombas GRUNDFOS Portugal, S.A.
Rua Calvet de Magalhães, 241
Apartado 1079
P-2770-153 Paço de Arcos
Tel.: +351-21-440 76 00
Telefax: +351-21-440 76 90

Republic of Moldova

MOLDOCON S.R.L.
Bd. Dacia 40/1
MD-277062 Chishinau
Phone: +373 2 542530
Telefax: +373 2 542531

Romania

GRUNDFOS Pompe România SRL
Sos. Panduri No. 81- 83, Sector 5
RO-050657 Bucharest
Phone: +40 21 4115460/4115461
Telefax: +40 21 4115462
E-mail: romania@grundfos.ro

Russia

ООО Грундфос
Россия, 109544 Москва, Школьная 39
Тел. (+7) 095 737 30 00, 564 88 00
Факс (+7) 095 737 35 36, 564 88 11
E-mail grundfos.moscow@grundfos.com

Serbia and Montenegro

GRUNDFOS Predstavništvo Beograd
Dr. Milutina Ivkovića 2a/29
YU-11000 Beograd
Phone: +381 11 26 47 877, 11 26 47 496
Telefax: +381 11 26 48 340

Singapore

GRUNDFOS (Singapore) Pte. Ltd.
24 Tuas West Road
Jurong Town
Singapore 638381
Phone: +65-6865 1222
Telefax: +65-6861 8402

Slovenia

GRUNDFOS PUMPEN VERTRIEB
Ges.m.b.H.,
Podružnica Ljubljana
Blatnica 1, SI-1236 Trzin
Phone: +386 1 563 5338
Telefax: +386 1 563 2068
E-mail: slovenia@grundfos.si

Spain

Bombas GRUNDFOS España S.A.
Camino de la Fuenteja, s/n
E-28110 Algete (Madrid)
Tel.: +34-91-848 8800
Telefax: +34-91-628 0465

Sweden

GRUNDFOS AB
Lunnagårdsgratan 6
431 90 Molndal
Tel.: +46-0771-32 30 00
Telefax: +46-31 231 94 60

Switzerland

GRUNDFOS Pumpen AG
Bruggacherstrasse 10
CH-8117 Fallanden/ZH
Tel.: +41-1-806 8111
Telefax: +41-1-806 8115

Taiwan

GRUNDFOS Pumps (Taiwan) Ltd.
7 Floor, 219 Min-Chuan Road
Taichung, Taiwan, R.O.C.
Phone: +886-4-2305 0878
Telefax: +886-4-2305 0888

Thailand

GRUNDFOS (Thailand) Ltd.
947/168 Moo 12, Bangna-Trad Rd., K.M. 3,
Bangna, Phrakankong
Bangkok 10260
Phone: +66-2-744 1785 ... 91
Telefax: +66-2-744 1775 ... 6

Turkey

GRUNDFOS POMPA SAN. ve TIC. LTD.
STI
Bulgurlu Caddesi no. 32
TR-81190 Uskudar Istanbul
Phone: +90 - 216-4280 306
Telefax: +90 - 216-3279 988

Ukraine

ТОВ ГРУНДФОС Україна
ул. Владимирская, 71, оф. 45
г. Киев, 01033, Украина,
Тел. +380 44 289 4050
Факс +380 44 289 4139

United Arab Emirates

GRUNDFOS Gulf Distribution
P.O. Box 16768
Jebel Ali Free Zone
Dubai
Phone: +971-4- 8815 166
Telefax: +971-4-8815 136

United Kingdom

GRUNDFOS Pumps Ltd.
Grovebury Road
Leighton Buzzard/Beds, LU7 8TL
Phone: +44-1525-850000
Telefax: +44-1525-850011

U.S.A.

GRUNDFOS Pumps Corporation
17100 West 118th Terrace
Olathe, Kansas 66061
Phone: +1-913-227-3400
Telefax: +1-913-227-3500

Uzbekistan

Представительство ГРУНДФОС в
Ташкенте
700000 Ташкент ул.Усмона Носира 1-й
тулик 5
Телефон: (3712) 15-68-15
Факс: (3712) 15-36-35

96006320 0905	205
Repl. 96006320 0902 96434825 0304	